

FOURTEENTH ANNUAL
S.D.S.U ALUMNI FIELD TRIP
AFTON CANYON AREA, EAST OF BARSTOW
Field Trip Date: April 7, 8, & 9

2000

ACTIVITIES

This year's trip is to the Afton Canyon Area east of Barstow, Ca. This area has mines, caves, slot canyons, archaeological features and a portion of the old Mojave Road. We will be outside of park boundaries, so mineral collection is allowed. This area is known to have a variety of interesting specimens, including geodes.

FACILITIES

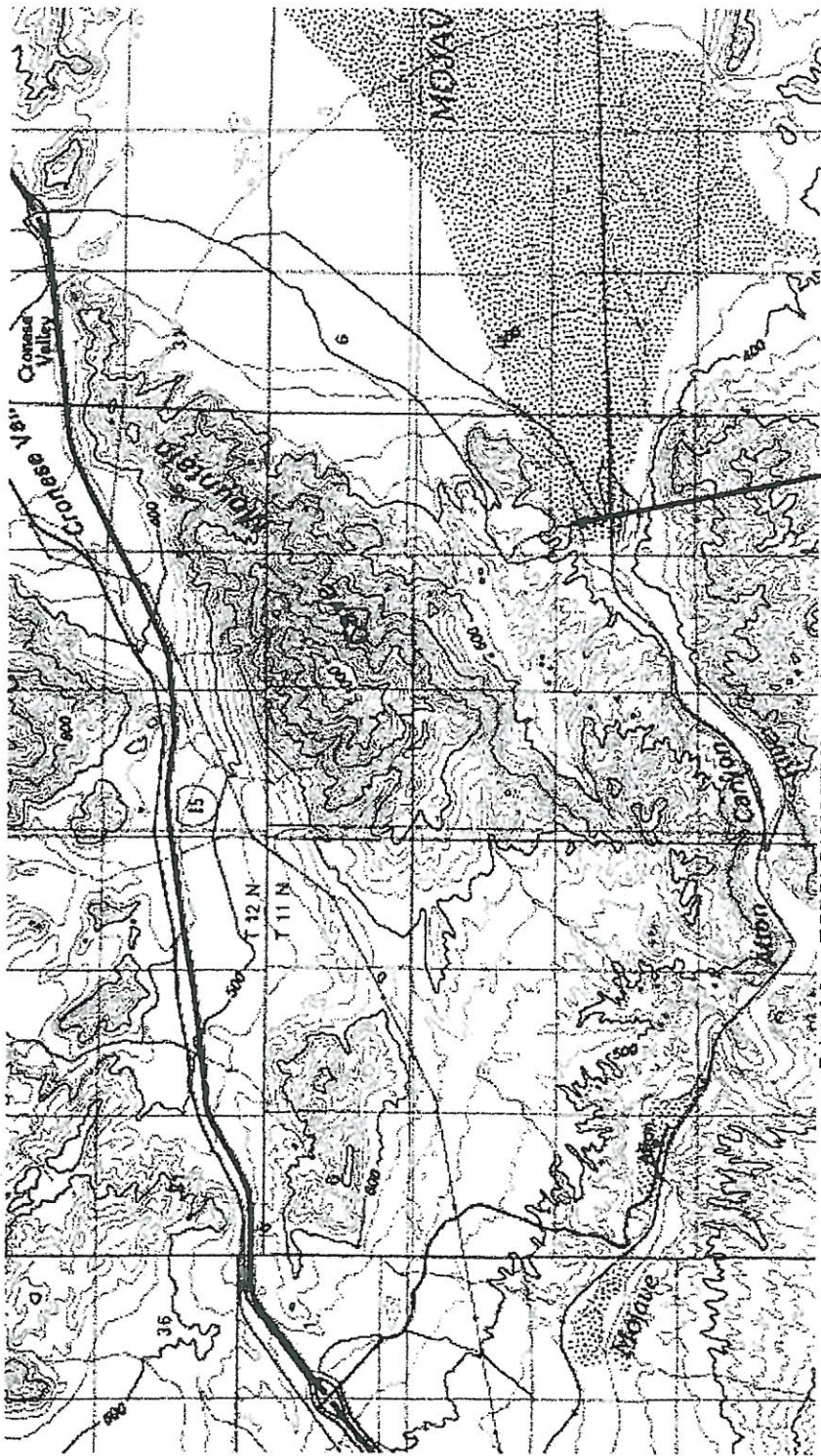
We will be camping near a large abandoned mine, in an area with reasonable access but also popular with off-road enthusiasts. There are no facilities at the camp, so bring what you need. Expect that it will be cold at night (in the 40's). There is no fee as long as ground fires are permitted. The nearest stores are in Barstow or Baker.

COMMUNICATIONS

We will be monitoring CB-11, 2-Meter Ham simplex 146.520, repeater 147.180, positive offset, tone 151.4. Any questions call Tony Sawyer, ph. 1-800-HYDROGEO, e-mail tvts@hydrogeologist.com.

DIRECTIONS

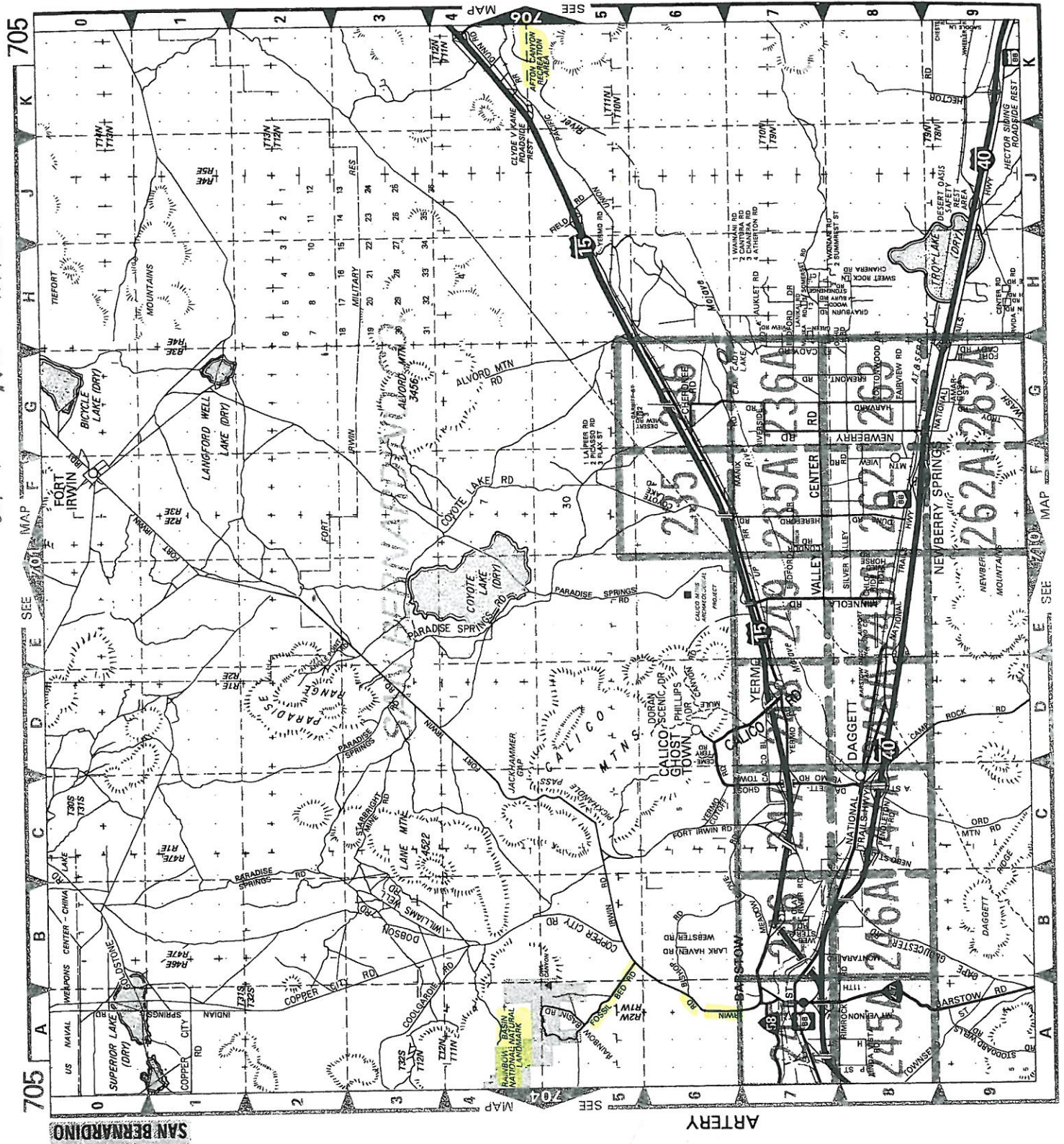
From Barstow, take Hwy 15 east past the Afton Canyon off-ramp to the next off-ramp, Cronese Lake Road/Basin Road. If coming from Baker, it is the third off-ramp out of Baker. There will be SDSU Alumni signs. Go south on this well-graded dirt road. You will pass an information sign on your left, then at about 1.3 miles from the freeway come to a Y (both well-graded), bear left. Follow this road for about 3.5 miles, then turn right toward the mine and camp.



Printed from TOPO! ©1997 Wildflower Productions (www.topo.com)

Camp

21 100 After Rd & I-15



SAN BERNARDINO

ARTERY

SAN BERNARDINO

ARTERY

