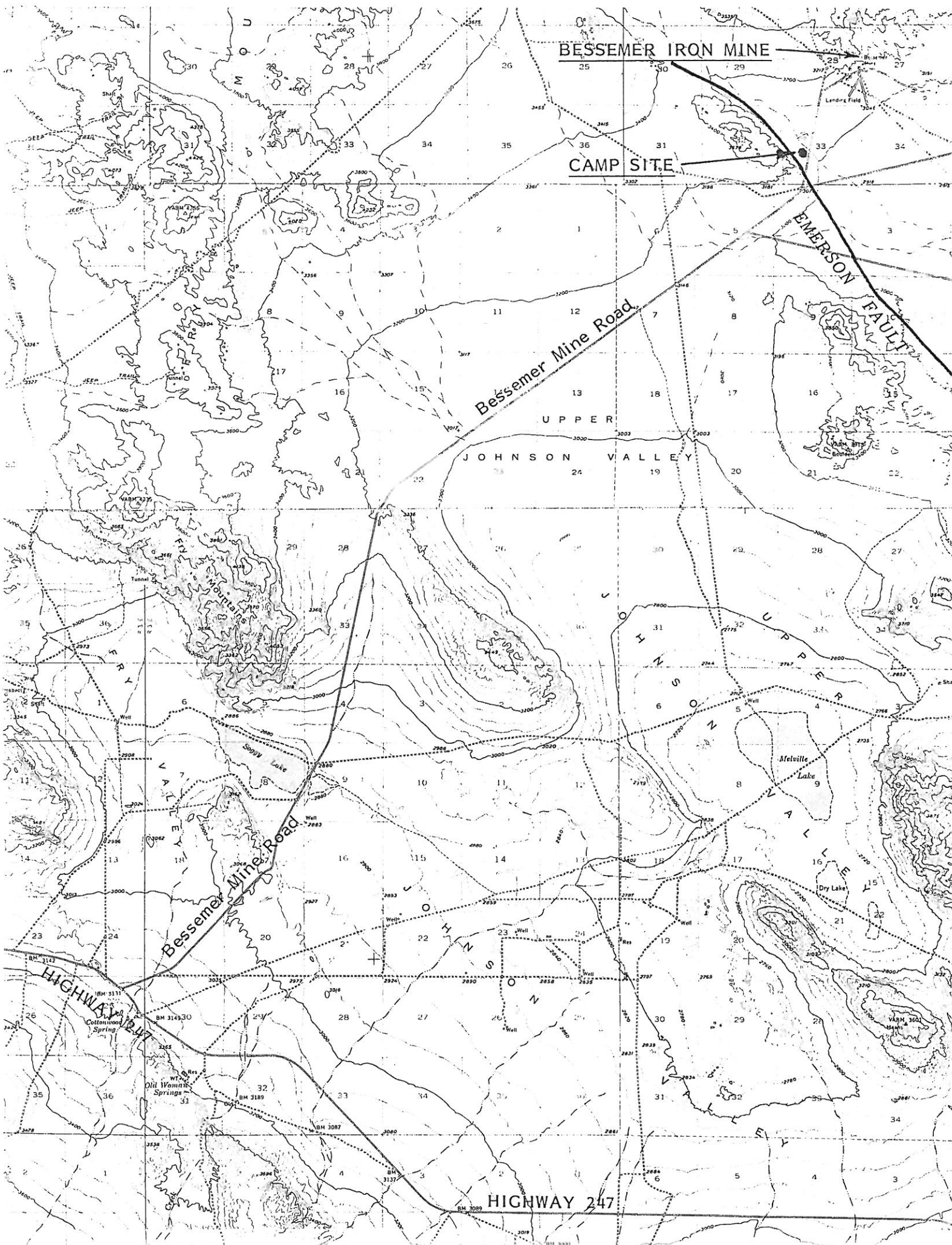


## SEVENTH ANNUAL

LANDERS EARTHQUAKE of JUNE 28, 1992



BESSEMER IRON MINE

CAMP SITE

EMERSON FAULT

Bessemer Mine Road

UPPER  
JOHNSON VALLEY

JOHNSON VALLEY

Bessemer Mine Road

HIGHWAY 247

HIGHWAY 247

For those of you who have portable radio capabilities we have designated the following frequencies for use during the field trip. We will try to monitor CB Ch 11 for those arriving with questions. If you are a Ham, call Bill Elliott to make arrangements for frequencies to use. If you don't have transmitting capabilities, and have a scanner, you are always welcome to listen in...

Citizens Band (C.B.) Channel 11

Amateur Radio 2 meters:

Simplex 146.52

Repeaters:

Cestline 146.850 (down 600)

Keller Peak 146.985 (down 600)

Johnstone Peak 146.820 (down 600)