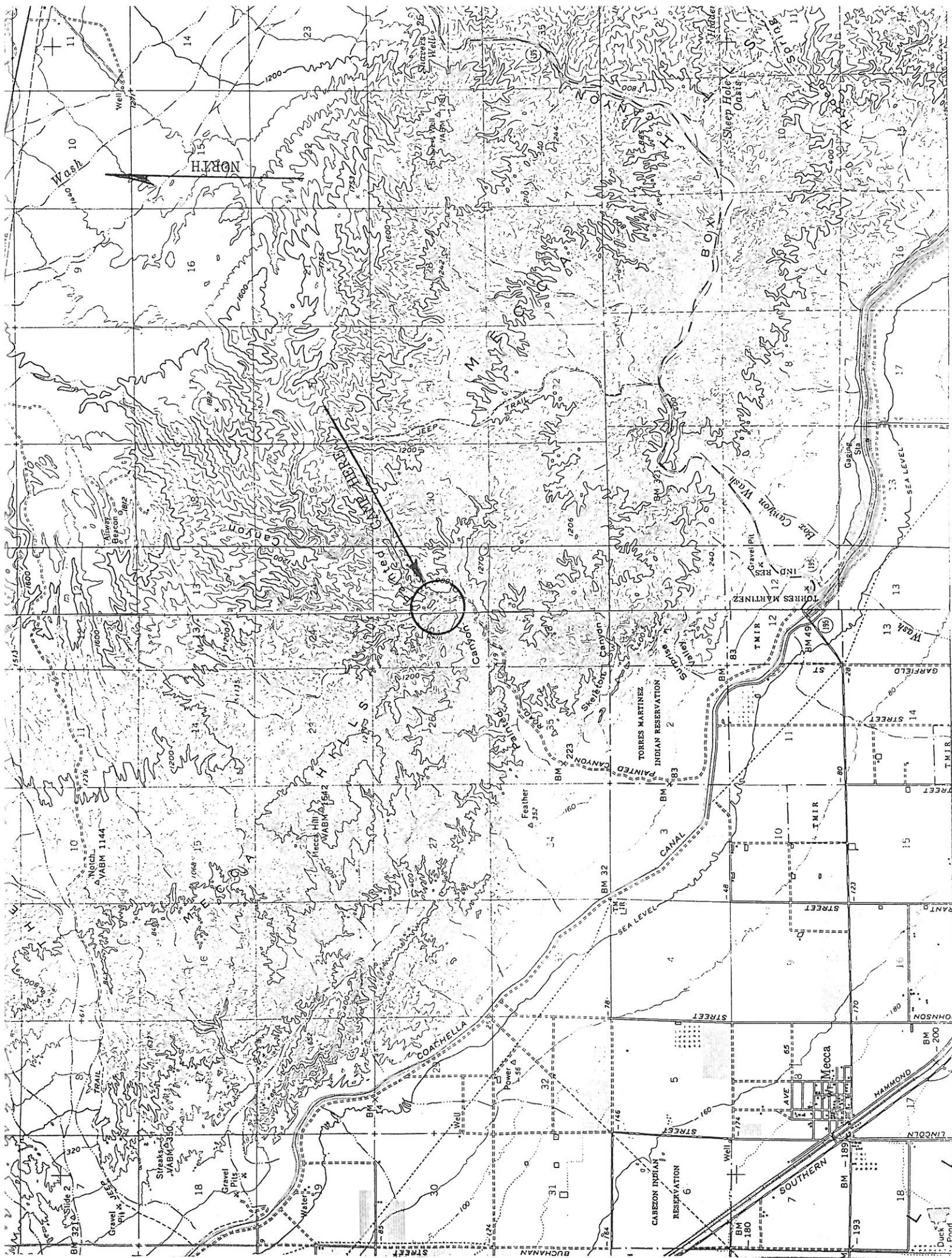
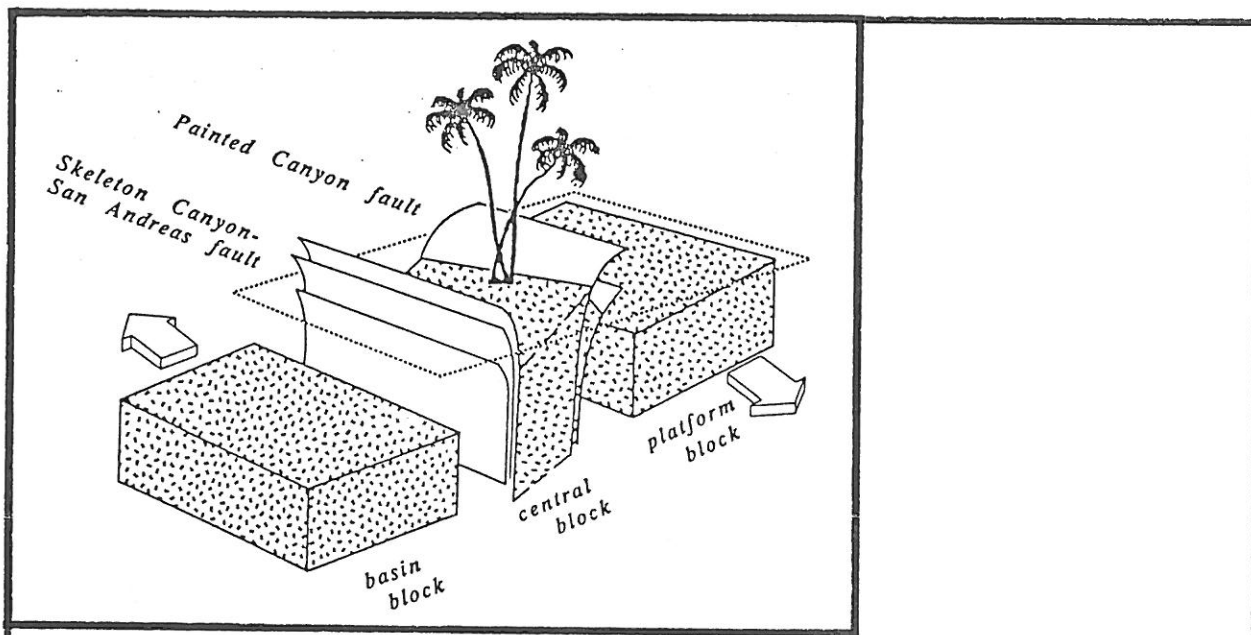


The San Diego State University Department of Geology Alumni Association will be holding their 4th annual field trip on February 23, 24, and 25, 1990, in Painted Canyon, Mecca Hills, approximately 5½ miles northeasterly from the town of Mecca, and approximately 34 miles southeasterly from Palm Springs (south-central Riverside County, California). As there are NO FACILITIES, it will be necessary to BRING EVERYTHING you will need, including WATER! Bring the family, friends (of rocks, dirt and fossils), and we'll look forward to seeing you at the end of the road in Painted Canyon. Call Bill Elliott at (619) 586-0870 for directions and/or questions answered.



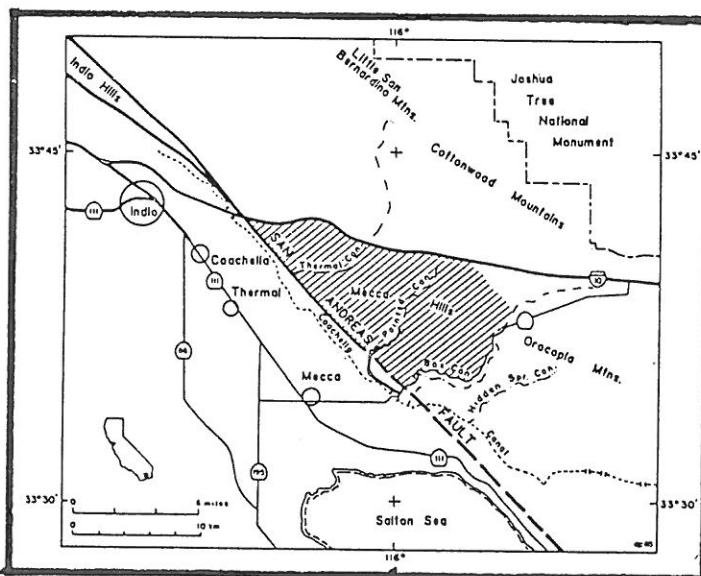


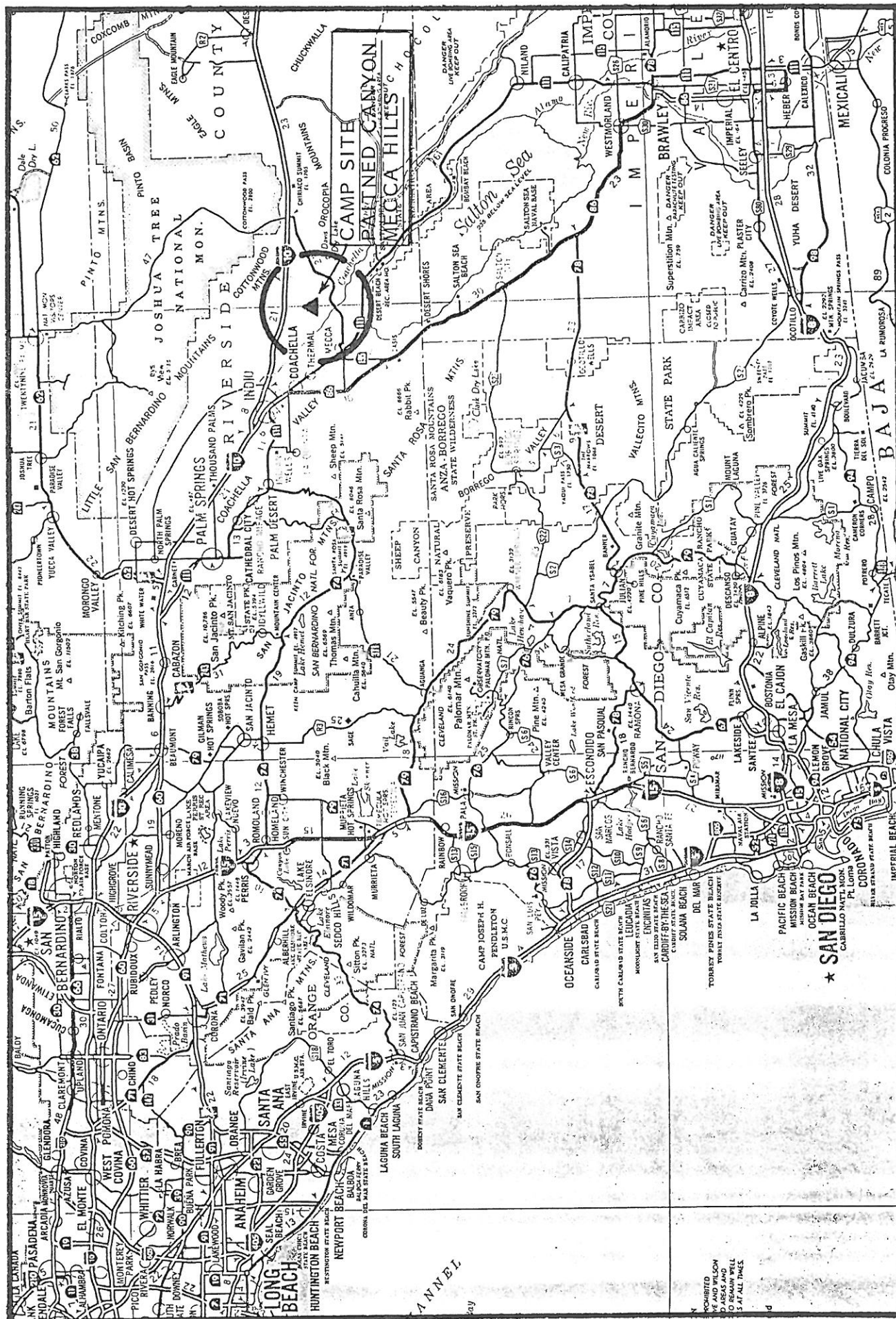


FOURTH ANNUAL
SAN DIEGO STATE UNIVERSITY
DEPARTMENT OF GEOLOGY ALUMNI

FIELD TRIP - FEBRUARY 23, 24, 25, 1990

Dry camping on the trace of the Painted Canyon Fault, in Painted Canyon, Mecca Hills, northeast of Mecca (see Auto Club map on the back). Bring **EVERYTHING** you will need (including water). Call Bill Elliott at (619) 586-0870 for details and directions. Palm Tree Structure cartoon and location map after Arthur G. Sylvester, AAPG-SEPM-SEG-SPWLA Pac. Sec. Field Trip Guide-book No. 3, 5-13-89.





★ SAN DIEGO
CABRILLO NATL MON
PL LOMA

UNPUBLISHED
AND SOON
TO REMAIN WELL
S AT ALL TIMES